

EXPERIENCE  THE NEW BUICK

2 0 1 7 B U I C K
ENVISION





Your sense of luxury has been set in
motion with **THE NEW 2017**
BUICK ENVISION.

Responsive performance, intelligent innovations and a thoughtfully
crafted interior ensure that Envision is a joy to drive, and a joy to share.



Welcome inside Envision.

Enter a cabin where you'll come to appreciate what's meant

by the idea of **BEAUTY FROM THE INSIDE OUT.**

With a modern interior designed around a center console with innovative dual-winged doors, standard features like QuietTuning™ with Active Noise Cancellation and an available seven-speaker Bose® premium audio system, Envision creates a profound sense that you're secure, connected and truly at ease.



It only takes an instant to form your first impression
of the Envision. One press of the accelerator proves it

has a **SPIRITED PERFORMANCE
SUITED TO THE WAY YOU LIVE.**

A glance at its elegant proportions confirms this Buick is crafted
to an exceptional degree of refinement. Its bold grille and jewel-like
LED-accented headlamps reflect the pure driving enjoyment you'll experience
in Envision. This is your kind of luxury.

RELAX

WHAT MAKES ONE EXPERIENCE MORE REFINED THAN ANOTHER? IT'S HOW THE DETAILS ENHANCE THE SENSATIONS YOU ENCOUNTER ALONG THE WAY.


Inspiration for the Envision interior didn't come from other vehicles. It came from the kind of places you go to relax in style. Think boutique hotels, luxurious day spas and other blissfully quiet retreats. Think understated, uncluttered design, where the quality of the finishes, the exceptional materials and the ambience of the lighting give the space a special feeling. With Envision, the result is a conversation space where up to five passengers can travel in remarkable acoustic comfort, thanks to QuietTuning—a systematic process designed to help reduce, block and absorb unwanted noise. You'll be in the perfect frame of mind to enjoy Envision's full complement of features.

- Premium soft-touch materials throughout, rich trim and ice-blue ambient lighting.
- Standard hands-free power liftgate, 60/40 fold-flat rear seats and a flat rear floor make loading your belongings easy.
- Standard eight-way adjustable driver and front-passenger seats with power lumbar.
- Available French stitched, leather-appointed seats.
- Available cooled and ventilated front seats.
- Available tri-zone HVAC automatic climate control system, standard sliding second-row seating with three seatback angles and available heated rear outboard seats.
- Available seven-speaker Bose premium audio system.





How does QuietTuning with Active Noise Cancellation work? By counteracting engine noise and helping to reduce outside noise with laminated glass in the windshield and front side windows. By forming a shield using inner-door sound barriers and triple door seals. By using hydraulic top engine mounts to help absorb engine noise and vibration before it gets to the cabin and by using seating materials that absorb noise.

A photograph of a man and a woman sitting in the front seats of a car. The woman, on the right, has long, wavy reddish-brown hair and is smiling broadly, looking out the window. The man, on the left, is wearing a dark blue jacket and is also looking out the window. The car's interior is visible, including the headrests and the window frame. The lighting is warm and natural, suggesting daytime.

It's something of a lost art, the art of conversation.
Thanks to QuietTuning, Envision celebrates it by inviting you
into a sanctuary where conversations can flourish.

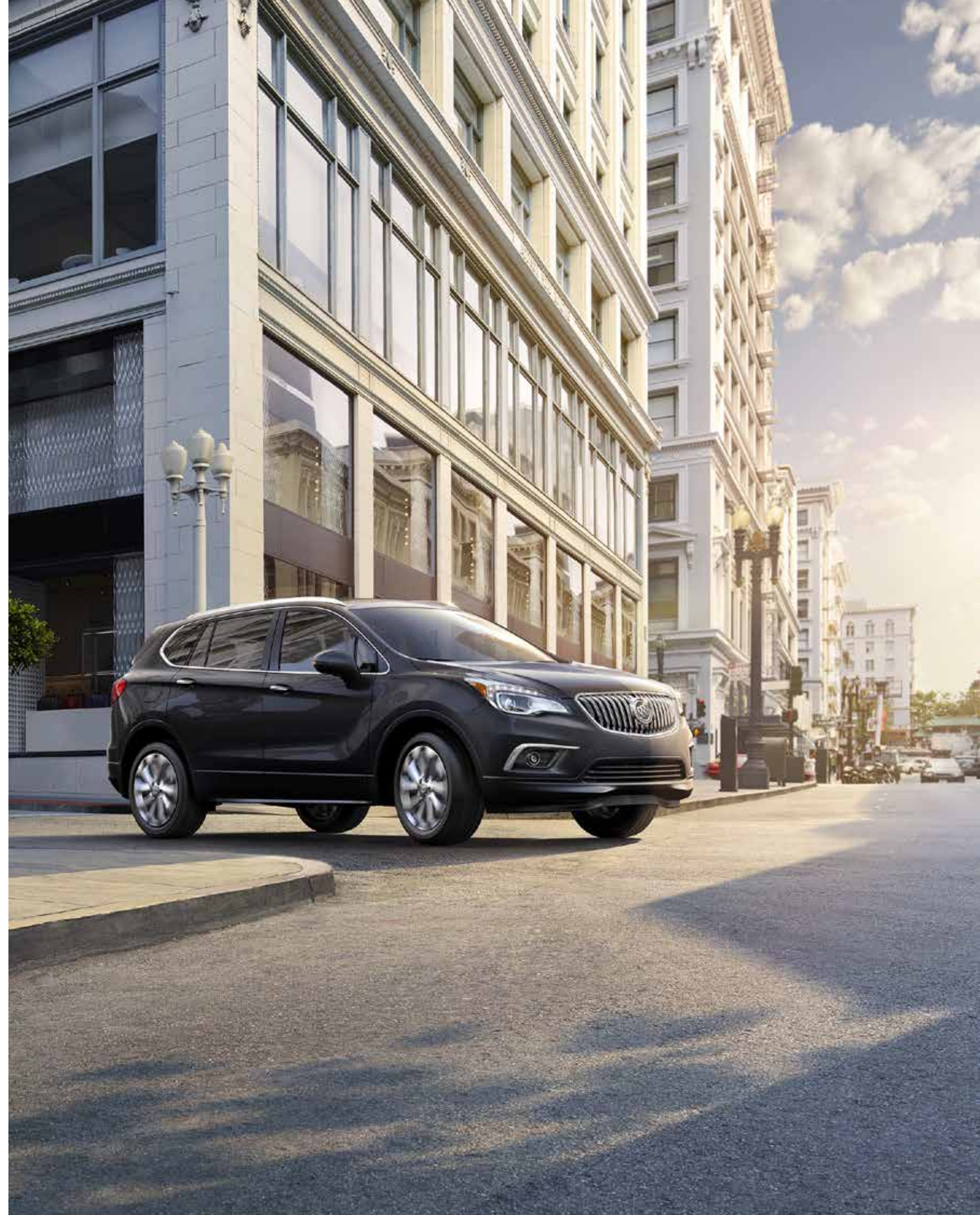
RESPOND

IN THE 2017 ENVISION, ADVANCED ENGINEERING SYSTEMS CREATE A NEW FEELING OF CONFIDENCE AND CONTROL FOR THE DRIVER.

What forges the connection between a car and its driver? It starts with how well a vehicle responds to driver input—the turn of a steering wheel, the press of a brake pedal, the voice command for your phone. Apple CarPlay™¹ integrates seamlessly with your iPhone®, and Android Auto™² works with your compatible smartphone. As you settle into the heated driver's seat, your hands wrap around the thick leather-wrapped rim of the available heated steering wheel, and your eyes scan the gauges laid out in front of you. Now engage the Start button and feel the powerful response of Envision's available turbocharged engine. Ready for the best feeling of all? Move the shift lever into drive. Your every move is met by an available intelligent All-Wheel Drive with Active Twin-Clutch System, helping ensure sure-footed traction.

- An efficient and spirited 2.5L engine with 197 hp is standard. Or choose the available 2.0L Turbo engine with 252 hp and 260 lb-ft of torque to turbocharge every drive.
- The available intelligent All-Wheel Drive with Active Twin Clutch automatically adjusts torque to each wheel to optimize traction and respond before slip occurs.
- Envision's tight turning radius makes for nimble maneuvers and easy parking.
- The available HiPer Strut front suspension provides Envision with responsive steering and cornering while it helps dampen road noise and vibration.
- Safety features and driver convenience alerts that are available include Forward Collision Alert, Side Blind Zone Alert with Lane Change Alert, Rear Cross Traffic Alert, Lane Keep Assist with Lane Departure Warning, Front and Rear Park Assist and a Safety Alert Seat, while 10 air bags² and a Rear Vision Camera are standard.

¹Vehicle user interfaces are products of Apple® and Google® and their terms and privacy statements apply. Requires compatible smartphone. Data plan rates apply. ²A NOTE ON CHILD SAFETY: Always use safety belts and the correct child restraint for your child's age and size, even with air bags. Even in vehicles equipped with the Passenger Sensing System, children are safer when properly secured in a rear seat in the appropriate infant, child or booster seat. Never place a rear-facing infant restraint in the front seat of any vehicle equipped with an active frontal air bag. See your vehicle Owner's Manual and child safety seat instructions for more safety information.





LISTEN

LET YOUR VOICE BE HEARD. IT'S ALL YOU NEED TO ACTIVATE FEATURES OF ENVISION'S ADVANCED AUDIO AND INTEGRATED SMARTPHONE SYSTEMS.

The 2017 Envision offers Apple CarPlay™ and Android Auto compatibility.¹ With Apple CarPlay,™ some of the apps you love on your iPhone® come alive through Siri® or the built-in display. And Android Auto easily integrates some of the power and functionality of your Android™ phone into Envision.

We made Envision quiet because we knew you wanted to hear what makes you happy. That's where Buick IntelliLink² comes in. It includes available audio features that let you stream files from your music apps. You can even use the "More Like This" function to instantly create a playlist of songs or artists similar to the one you're listening to.

INTUITIVE CONTROLS Many of the features found on the latest version of Buick IntelliLink² can be managed three ways: using the Color Touch Radio screen, intuitive natural-language voice commands or steering-wheel-mounted controls. And there's more that IntelliLink can do to help you organize life on the road.

BUICK INTELLILINK² offers the entertainment of SiriusXM Satellite Radio³ with Travel Link, with more than 140 channels, including commercial-free music, plus talk, sports, news, weather and more. And IntelliLink's customizable app tray allows you to organize the home screen according to your preferences.

¹Vehicle user interfaces are products of Apple® and Google and their terms and privacy statements apply. Requires compatible smartphone. Data plan rates apply. ²Full functionality requires compatible Bluetooth® and smartphone. Some devices require USB connectivity. ³SiriusXM audio and data services each require a subscription sold separately, or as a package, by SiriusXM Radio, Inc. If you decide to continue service after your trial, the subscription plan you choose will automatically renew thereafter and you will be charged according to your chosen payment method at then-current rates. Fees and taxes apply. To cancel, you must call SiriusXM at 1-866-635-2349. See SiriusXM Customer Agreement for complete terms at siriusxm.com. All fees and programming subject to change. Sirius, XM, SiriusXM and all related marks and logos are trademarks of SiriusXM Radio, Inc.

GUIDE

TRAVEL WITH THE ENVISION AND YOUR JOURNEY IS ACCOMPANIED BY A HOST OF AVAILABLE SAFETY INNOVATIONS.

On the 2017 Envision, the available Surround Vision Camera system uses four micro-cameras embedded in the vehicle to provide the driver with a bird's-eye view around the vehicle. When you're parking, checking the monitor can help you avoid obstacles in your blind spots and navigate tight spaces. And when you're driving down the road, available cameras, sensors and radar are at work watching out for you. Available Forward Collision Alert uses the cameras and radar to detect a potential collision with another vehicle on the road in front of you. If it senses that the driver isn't braking to avoid a collision, available Front Automatic Braking automatically engages the brakes. New for 2017, Teen Driver technology supports safe driving habits by muting the audio of the radio or any device paired with the vehicle when front-seat occupants aren't wearing their safety belts. Plus, it gives audible and visual warnings when Envision is traveling faster than preset speeds.



- **AVAILABLE SURROUND VISION CAMERA** A first for Buick, it provides a bird's-eye view of what's around you during low-speed maneuvering. Multiple cameras help you avoid obstacles, reduce blind spots and navigate even the tightest spaces with clarity and confidence.



- **AVAILABLE SAFETY ALERT SEAT** When a collision-avoidance technology such as available Lane Departure Warning triggers an alert, the Safety Alert Seat issues a warning of its own. The left and/or right side of the driver seat cushion gently vibrates to signal the direction of the approaching hazard. So, it can help you stay aware of your surroundings.



- **REAR VISION CAMERA WITH REAR CROSS TRAFFIC ALERT** To help you better navigate while backing up, the Rear Vision Camera shows you guidelines and live images of what's behind you on the 8-inch diagonal Color Touch Radio screen.



MANEUVER

ENVISION IS A NIMBLE SUV WITH INGENIOUS TECHNOLOGIES SUCH AS AUTOMATIC PARK ASSIST.

Available Automatic Park Assist uses ultrasonic sensors and clear driver cues to steer Envision into parallel and perpendicular parking spaces. Sensors search for an available space. Once engaged and in reverse, the system automatically steers into the space while you control the brake and shift lever. Here are other ways Envision helps you maneuver.

REAR CROSS TRAFFIC ALERT When you're backing out of a parking space, available Rear Cross Traffic Alert technology uses radar to detect vehicles approaching your Envision and alerts you if detected vehicles are within 65 feet of either side of your vehicle.

FORWARD COLLISION ALERT This available technology can help you to prevent frontal crashes by sensing when you are approaching a vehicle in front of you too quickly, and it alerts you with audible and visual warnings and vibration from the available Safety Alert Seat.

FRONT AUTOMATIC BRAKING Available Front Automatic Braking technology senses when a crash is imminent and then can automatically brake to help you reduce crash damage or help avoid colliding with the vehicle ahead in some low-speed situations.

SIDE BLIND ZONE ALERT WITH LANE CHANGE ALERT Available Side Blind Zone Alert issues a visual warning when a vehicle enters your blind zone. Available Lane Change Alert uses radar to help watch for and warn you of vehicles approaching from behind when you're changing lanes.

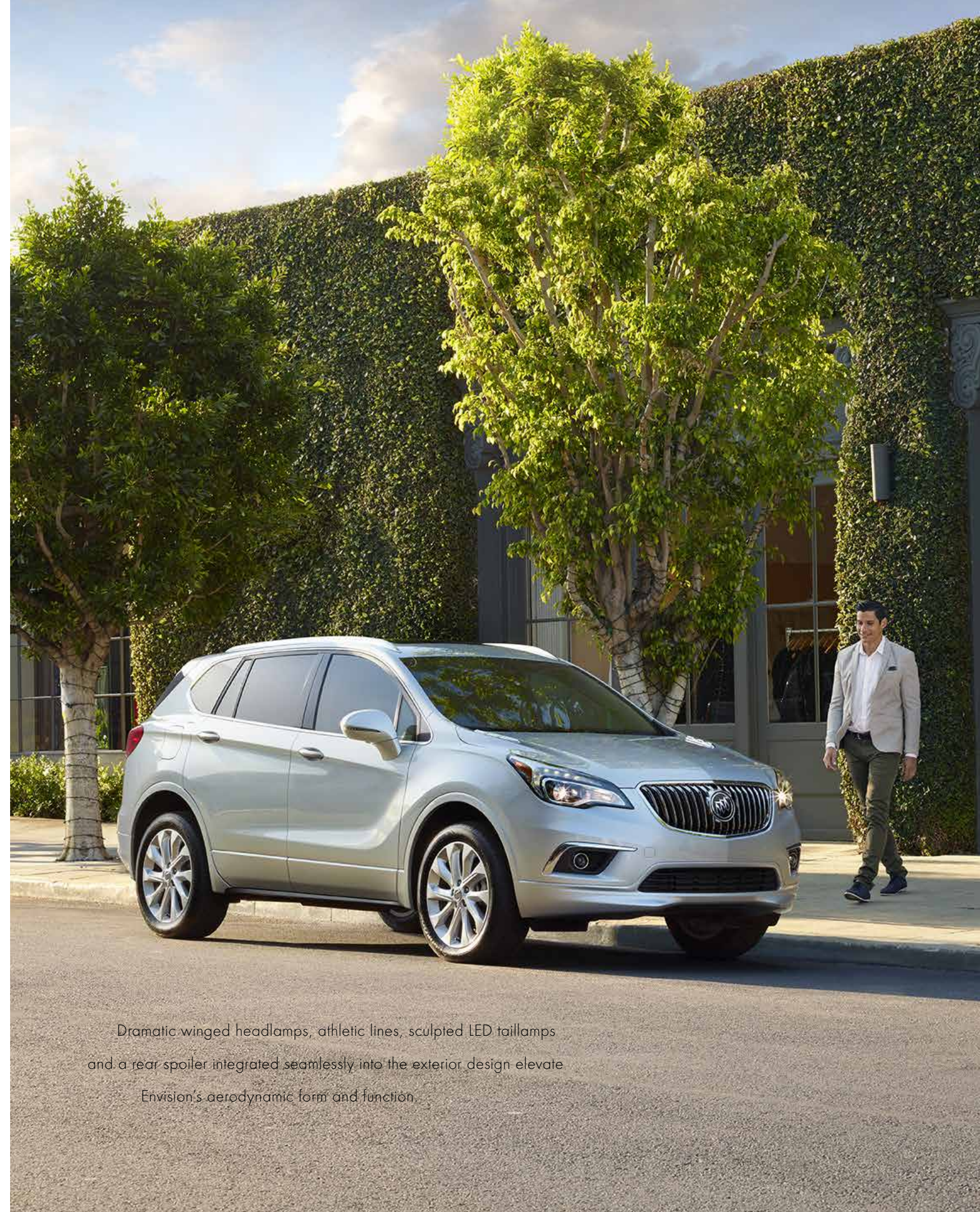
LANE KEEP ASSIST WITH LANE DEPARTURE WARNING To help drivers avoid unintentionally drifting out of their lane, available Lane Keep Assist provides gentle steering wheel turns, and if necessary, audible and visual lane-departure alerts.

These safety features are no substitute for the driver's responsibility to operate the vehicle in a safe manner. The driver should remain attentive to traffic, surroundings and road conditions at all times. Read the vehicle Owner's Manual for important feature limitations and information.

ACCESS

A HANDS-FREE POWER LIFTGATE OPENS AND CLOSES AUTOMATICALLY TO MAKE LIFE A LITTLE EASIER.

You know that moment when you realize you need an extra hand? Well, help is now here, thanks to Envision's hands-free power liftgate. This standard feature allows you to open and close Envision's liftgate simply by moving your foot under a sensor beneath the rear bumper. As long as your Envision's keyless entry fob is in your possession, this convenience is always there for you when you find your hands full. And if we know you, that's a situation you find yourself in all the time.



Dramatic winged headlamps, athletic lines, sculpted LED taillamps and a rear spoiler integrated seamlessly into the exterior design elevate Envision's aerodynamic form and function.



CONNECT

THE AVAILABLE WI-FI® HOTSPOT¹ PROVIDES A MORE POWERFUL CONNECTION THAN A SMARTPHONE OR MOBILE HOTSPOT.

The available Wi-Fi hotspot¹ now travels with you. Stay connected and move effortlessly from home to work to just about anywhere without losing touch. Stream movies and TV on the go, using your favorite apps on your Wi-Fi devices.

The available built-in Wi-Fi hotspot¹ supports up to seven devices, so your passengers can surf, scan, create, post and game their way through any journey at 4G LTE speed.

Any time your vehicle is on, or in accessory mode, your hotspot is available and ready to connect to your devices, so it's easy to use. Our strong signal means you have a fast and reliable connection. And because the built-in Wi-Fi hotspot is powered by your vehicle, you're not reliant on your mobile device battery.

ONSTAR SAFETY AND SECURITY



As you travel with the ones you care about most, available OnStar^{®1} is with you to empower every moment. With a paid OnStar service plan, you can have a 24/7 lifeline to specially trained Advisors, ready to help if you've been in a crash, your car's been stolen, you're lost or you need Roadside Assistance.²

EMERGENCY HELP WHEN IT MATTERS MOST Using built-in sensors, Automatic Crash Response³ can connect you to an Emergency Medical Dispatch-Certified Advisor⁴ immediately after a crash to help get you the care you need, even if you can't ask for it. Using Injury Severity Prediction technology, these specially trained Advisors⁴ can notify first responders about the likelihood of serious injury so they can provide help right away. You can feel confident knowing you have a team, 24/7, to get you the assistance you need.

SECURITY YOU CAN COUNT ON If your vehicle is stolen, you can be assured OnStar Advisors are ready to take action. Once a vehicle is reported stolen, OnStar Advisors can work with the police to quickly recover it. They can use GPS technology to pinpoint its location, slow the vehicle if conditions are safe and even prevent it from being restarted.⁵ And with Theft Alarm Notification,⁶ if your vehicle alarm sounds, we can let you know via text, email or a phone call. One simple call puts a team into action to help recover your vehicle quickly and safely.



¹Visit onstar.com for coverage map, details and system limitations. Services vary by model. Service plan required. ²Roadside service provided by Allstate Roadside Services. Limitations and restrictions apply. ³Visit onstar.com for vehicle availability. OnStar acts as a link to existing emergency service providers. Not all vehicles may transmit all crash data. ⁴OnStar Advisors are certified by the International Academies of Emergency Dispatch. ⁵Services are subject to user terms and limitations and vary by vehicle model. Requires subscription to Security Plan, Guidance Plan or Safety & Security Plan. These services are intended to assist with vehicle recovery and do not prevent theft or protect against damage or loss. Visit onstar.com for more details. ⁶Requires armed GM factory-installed theft-deterrent system; subscription to Security Plan, Guidance Plan or Safety & Security Plan; and selection of notification communication preference(s). Additional messaging and data rates may apply. Visit onstar.com for more details.



PERSONALIZE

COLOR AND WHEEL SELECTION IS SIMPLE WITH ENVISION.

EXTERIOR COLORS

SUMMIT WHITE¹



GALAXY SILVER METALLIC²



CHILI RED METALLIC²



MIDNIGHT AMETHYST METALLIC²



EBONY TWILIGHT METALLIC²



BRONZE ALLOY METALLIC²



WHEELS



RQH 18" 10-SPOKE ALUMINUM



PZW 18" 10-SPOKE POLISHED ALUMINUM



RT7 19" 10-SPOKE ALUMINUM WITH PREMIUM MANOJIAN FINISH

¹Only available on base Envision. ²Additional charge, premium paint. No-cost option on Preferred.

SELECT

PREMIUM MATERIAL SELECTION
IS SIMPLE WITH ENVISION.

INTERIOR TRIM

LIGHT NEUTRAL WITH EBONY ACCENTS CLOTH OR LEATHER-APPOINTED SEATING



EBONY WITH EBONY ACCENTS LEATHER-APPOINTED SEATING



EBONY WITH DARK PLUM ACCENTS LEATHER-APPOINTED SEATING



CHESTNUT BROWN WITH EBONY ACCENTS LEATHER-APPOINTED SEATING



STANDARD EQUIPMENT ON ENVISION

POWER AND PERFORMANCE

Drivetrain Front-Wheel Drive
Engine 2.5L DOHC SIDI with VVT
Transmission 6-speed automatic with Driver Shift Control
Suspension Front MacPherson strut
Axle 3.50 final drive ratio
Steering Power electric
Brakes 4-wheel power anti-lock, 4-wheel disc (17" front, 16" rear)
Parking Brake Electronic
Exhaust Single-outlet stainless steel
StabiliTrak Stability control system includes traction control

COMFORT AND CONVENIENCE

Active Noise Cancellation
Cabin Air Filtration System
Air Conditioning Dual-zone automatic climate control
Cruise Control Electronic
Cupholders 2 front, 2 in rear armrest
Defogger Rear window
Driver Information Center Enhanced 4.2" diagonal color configurable display
E-Z Key Passive Entry System Extended range with keyless start and automatic door lock/unlock
Floor Mats Carpeted front and rear
Power Outlets 12-volt covered, 1 front, 1 rear, 1 cargo area
Liftgate Power hands-free open and close, programmable
Lighting Interior ambient lighting
Park Assist Ultrasonic, rear
Push-Button Start
QuietTuning Buick process to reduce, block and absorb noise and vibration

Seat Trim Cloth with leatherette accents
Seating Heated driver and front passenger
Seats Front bucket, rear 60/40 split-folding reclining and sliding with one-touch flat folding
Seat Adjuster Driver and front-passenger 8-way power with power lumbar
Shift Knob Leather-wrapped
Steering Wheel Leather-wrapped with audio controls, phone controls, Driver Information Center and vehicle controls
Visors Illuminated driver and front passenger
Windows Power front express-up and -down and rear with express-down

ENTERTAINMENT SYSTEMS

Available Built-in Wi-Fi® Hotspot¹ For up to 7 devices
Audio System Buick IntelliLink² with AM/FM, 8" diagonal high-resolution color touch-screen, MP3 playback, auxiliary port and 2 USB ports³
Buick IntelliLink² Smartphone control via voice activation and steering-wheel-mounted controls. It also enables streaming stereo audio from the phone through available services such as Pandora® internet radio⁴ and Gracenote.^{5,6}
Apple CarPlay™ and Android Auto™ Compatibility⁵
SiriusXM Satellite Radio⁶ Includes 3 trial months of service. For more information, visit siriusxm.com.
Speakers Premium 6-speaker system
USB Ports³ 2 connectivity ports in the center console for various digital media devices and MP3 player support. Dual, charging only, located in the rear of the center console.
Bluetooth^{8,7} Personal cell phone connectivity to vehicle audio system

SAFETY AND SECURITY

10 Air Bags⁸ Single-stage driver and dual-stage front-passenger frontal, driver and front-passenger knee, front and rear side-impact and roof rail for outboard seating
LATCH System Lower Anchors and Top tethers for CHildren safety seats
Rear Vision Camera

STYLING AND FUNCTIONALITY

Daytime Running Lamps LED-accented signature lighting
Door Handles Body-color with chrome accent
Glass Deep-tinted
Headlamps Halogen projector-beam with automatic headlamp control
Mirrors Outside heated, power-adjustable
Fog Lamps
Wipers Front intermittent
Wheels RQH 18" 10-spoke painted aluminum

SPECIFICATIONS

DIMENSIONS (INCHES)

Wheelbase	108.3
Overall length	183.7
Body width	72.4
Overall height	66.8
Track width, front	62.0
Track width, rear	62.0
Head room, front	40.0

Head room, rear	38.5
Shoulder room, front	57.0
Shoulder room, rear	55.8
Hip room, front	54.4
Hip room, rear	53.1
Leg room, front	40.9
Leg room, rear	37.5

SPECIFICATIONS AND CAPACITIES

Engine Type	2.5L 4-cylinder SIDI w/VVT
Horsepower	197 @ 6300 rpm
Torque	192 lb-ft @ 4400 rpm
Engine Type	2.0L Turbo w/VVT
Horsepower	252 @ 5500 rpm
Torque	260 lb-ft @ 2000 rpm
EPA-estimated mpg	22 city/29 hwy 2.5L FWD 21 city/28 hwy 2.5L AWD 20 city/26 hwy 2.0L AWD
Cargo Volume, rear seat up (cu. ft.) ¹⁰	26.9
Cargo Volume, rear seat down (cu. ft.) ¹⁰	57.3
Fuel Tank, Gallons (approx.)	17.3
Curb Weight (lbs)	3755 FWD 3929 AWD

PREFERRED

INCLUDES ALL STANDARD EQUIPMENT ON ENVISION

AVAILABLE OPTIONS ON PREFERRED:

All-Wheel Drive

ESSENCE

INCLUDES ALL STANDARD EQUIPMENT ON PREFERRED PLUS:

Air Conditioning Tri-zone automatic climate control
Memory Settings For driver seat, mirrors and driver personalization
Rear Cross Traffic Alert
Side Blind Zone Alert with Lane Change Alert
Seat Trim Perforated leather-appointed
Seating Heated rear outboard positions
Luggage Rack Roof rails, chrome
Wheels PZW 18" 10-spoke polished aluminum
Steering Wheel Heated

AVAILABLE OPTIONS ON ESSENCE:

All-Wheel Drive
Audio System with Navigation⁹ IntelliLink² with AM/FM, 8" diagonal high-resolution color touch-screen, MP3 playback, GPS navigation, auxiliary port and 2 USB ports³
Moonroof Panoramic, tilt-sliding

PREMIUM

INCLUDES ALL STANDARD EQUIPMENT ON ESSENCE PLUS:

Drivetrain Intelligent All-Wheel Drive with Active Twin Clutch
Engine 2.0L Turbo DOHC SIDI with VVT
Differential Automatic locking rear, twin clutch
Suspension Front HiPer Strut
Axle 3.17 final drive ratio
Brakes 4-wheel power anti-lock, 4-wheel disc (17" front and rear)
Exhaust Dual stainless steel with bright tips
Speakers Bose® premium 7-speaker system with amplifier
Driver Information Center Enhanced 8" diagonal color configurable display
Following Distance Indicator
Forward Collision Alert
Lane Keep Assist with Lane Departure Warning
Power Outlet 1 120V, 400W rear center console
Safety Alert Seat Driver
Park Assist Ultrasonic, front and rear
Wheels RT7 19" 10-spoke aluminum with premium Manooagian silver finish
Wipers Front intermittent, Rainsense

AVAILABLE OPTIONS ON PREMIUM:

Audio System with Navigation⁹
Moonroof Panoramic, tilt-sliding

PREMIUM II

INCLUDES ALL STANDARD EQUIPMENT ON PREMIUM PLUS:

Audio System with Navigation⁹
Head-Up Display
Seats Driver-adjustable thigh support, ventilated and cooled driver and front passenger
Headlamps Articulating projector-beam, High-Intensity Discharge (HID), IntelliBeam auto high-beam control and Automatic Leveling System
Automatic Park Assist Parallel and perpendicular parking

AVAILABLE OPTIONS ON PREMIUM II:

Driver Confidence Package Includes Adaptive Cruise Control, Surround Vision and Front Automatic Braking
Moonroof Panoramic, tilt-sliding

¹Visit onstar.com for vehicle availability, details and system limitations. Services and connectivity vary by model, conditions and location. Requires active service and data plan. Data plans provided by AT&T.[®] ²Full functionality requires compatible Bluetooth and smartphone. Some devices require USB connectivity. Data plan rates apply. ³Not compatible with all devices. ⁴Data plan rates apply. ⁵Vehicle user interfaces are products of Apple® and Google® and their terms and privacy statements apply. Requires compatible smartphone. Data plan rates apply. ⁶If you decide to continue service after your trial, the subscription plan you choose will automatically renew thereafter and you will be charged according to your chosen payment method at then-current rates. Fees and taxes apply. To cancel, you must call SiriusXM at 1-866-635-2349. See SiriusXM Customer Agreement for complete terms at siriusxm.com. All fees and programming subject to change. For more information about NavTraffic, visit siriusxm.com/navtraffic. For more information about Travel Link, visit siriusxm.com/travellink. Sirius, XM, SiriusXM and all related marks and logos are trademarks of SiriusXM Radio, Inc. ⁷Go to my.buick.com/learn to find out which phones are compatible with the vehicle. ⁸A NOTE ON CHILD SAFETY: Always use safety belts and the correct child restraint for your child's age and size, even with air bags. Even in vehicles equipped with the Passenger Sensing System, children are safer when properly secured in a rear seat in the appropriate infant, child or booster seat. Never place a rear-facing infant restraint in the front seat of any vehicle equipped with an active frontal air bag. See your vehicle Owner's Manual and child safety seat instructions for more safety information. ⁹Map coverage available in the United States, Puerto Rico and Canada. ¹⁰Cargo and load capacity limited by weight and distribution.



IMPORTANT WORDS

ENVISION
INFORMATION.



Since some information may have been updated since the time of printing, please check with your Buick dealer for complete details. Buick reserves the right to lengthen or shorten the model year for any product for any reason, or to start and end model years at different times.

NEW-VEHICLE LIMITED WARRANTY This warranty is for GM vehicles registered in the USA. See your Buick dealer for terms and conditions.

4 years/50,000 miles (whichever comes first): Bumper-to-Bumper Limited Warranty. The entire vehicle is warranted for repairs, including parts and labor, to correct defects in materials or workmanship. The warranty covers towing to the nearest Buick dealership, and there is no deductible for warranty repairs during the warranty period. The warranty transfers automatically with vehicle ownership during the warranty period.

6 years/70,000 miles (whichever comes first): Transferable Powertrain Limited Warranty plus Roadside Assistance and Courtesy Transportation.

6 years/100,000 miles (whichever comes first): Body and sheet metal components are warranted against rust-through corrosion.

EXPERIENCE BUICK PROTECTION Every 2017 Buick model includes a maintenance program that covers the first two visits of oil and filter changes, tire rotations and 27-point inspections for up to 2 years or 24,000 miles, whichever comes first (does not include air filters). The program is fully transferable to subsequent owners. See participating dealer for other restrictions and complete details.

AN IMPORTANT NOTE ABOUT ALTERATIONS AND WARRANTIES

Installations or alterations to the original equipment vehicle (or chassis) as distributed by General Motors are not covered by the General Motors New-Vehicle Limited Warranty. The special body company, assembler, equipment installer or upfitter is solely responsible for warranties on the body or equipment and any alterations (or any effect of the alterations) to any of the parts, components, systems or assemblies installed by GM. General Motors is not responsible for the safety or quality of design features, materials or workmanship of any alterations by such suppliers.

ASSEMBLY Buick vehicles and their components are assembled or produced by different operating units of General Motors, its subsidiaries or suppliers to GM worldwide. We sometimes find it necessary to produce Buick vehicles with different or differently sourced components than originally scheduled. Since

some options may be unavailable when your vehicle is assembled, we suggest that you verify that your vehicle includes the equipment you ordered or, if there are changes, that they are acceptable to you.

ENGINES Buick products are equipped with engines produced by GM Powertrain or other suppliers to GM worldwide. The engines in Buick products may also be used in other GM makes and models.

TRAILERING AND OFF-ROAD DRIVING INFORMATION Please go to buick.com and carefully review the vehicle Owner's Manual for important safety information about trailering or off-road driving in your vehicle.

A NOTE ON CHILD SAFETY Always use safety belts and the correct child restraint for your child's age and size, even with air bags. Even in vehicles equipped with the Passenger Sensing System, children are safer when properly secured in a rear seat in the appropriate infant, child or booster seat. Never place a rear-facing infant restraint in the front seat of any vehicle equipped with an active frontal air bag. See your vehicle Owner's Manual and child safety seat instructions for more safety information.

FLEET ORDERS Some standard content may be deleted with fleet orders. See dealer for details.

TAKE OWNERSHIP TO THE NEXT LEVEL Create an Owner Center account to gain unrestricted access to everything you need to get the most out of your new vehicle. Receive alerts and service offers, schedule service, view vehicle-specific how-to videos and check service records. All online, anytime. Go to my.buick.com to take a tour or register your Buick today.

GM, the GM logo, Buick, the Buick emblem, OnStar, the OnStar emblem and the slogans, emblems, vehicle model names, vehicle body designs and other marks appearing in this catalog are the trademarks and/or service marks of General Motors, its subsidiaries, affiliates or licensors. Sirius, XM and all related marks and logos are trademarks of SiriusXM Radio, Inc. The Facebook logo is a trademark of Facebook, Inc. The Twitter logo is a trademark of Twitter, Inc. The YouTube logo, Android Auto and Google Play are trademarks of Google Inc. Apple CarPlay, Siri, iPhone and iTunes are trademarks of Apple, Inc. The Instagram logo is a trademark of Instagram, Inc. ©2016 General Motors. All rights reserved.

To learn more about why Certified Service is the perfect companion for your Envision, click on mycertifiedservice.com.