



BUICK

BUICK.COM



2018 BUICK

ENVISION







Envision Premium II shown in Galaxy Silver Metallic

Your sense of luxury has been set in motion with

**THE 2018 BUICK ENVISION.**

Responsive performance, intelligent innovations and a thoughtfully  
crafted interior ensure that Envision is a joy to drive and a joy to share.





Welcome inside Envision. Enter a cabin where you'll come to appreciate what's meant by the idea of **BEAUTY FROM THE INSIDE OUT.**

With a modern interior designed around a center console with innovative dual-winged doors, standard features such as QuietTuning™ with Active Noise Cancellation and an available seven-speaker Bose® premium audio system, Envision creates a profound sense that you're secure, connected and truly at ease.



Envision Premium II shown in Bronze Alloy Metallic with available features



It only takes an instant to form your first impression. One press of the accelerator proves Envision has a **SPIRITED PERFORMANCE SUITED TO THE WAY YOU LIVE.** A glance at its elegant proportions confirms this Buick is crafted to an exceptional degree of refinement.

Its bold grille and jewel-like LED-accented headlamps reflect the pure driving enjoyment you'll experience in Envision. This is your kind of luxury.



## RELAX

WHAT MAKES ONE EXPERIENCE MORE REFINED THAN ANOTHER? IT'S HOW THE DETAILS ENHANCE THE SENSATIONS YOU ENCOUNTER ALONG THE WAY.

Inspiration for the Envision interior didn't come from other vehicles. It came from the sorts of places you go to relax in style. Think boutique hotels, luxurious day spas and other blissfully quiet retreats. Think understated, uncluttered design, where the quality of the finishes, the exceptional materials and the ambience of the lighting give the space a special feeling. With Envision, the result is a conversation space where up to five passengers can travel in remarkable acoustic comfort. You'll be in the perfect frame of mind to enjoy Envision's full complement of features.

- Premium soft-touch materials throughout, rich trim and ice-blue ambient lighting.
- Standard hands-free power liftgate, 60/40 fold-flat rear seats and a flat rear floor.
- Standard eight-way adjustable driver and front-passenger seats with power lumbar.
- Available French stitched, leather-appointed seats.
- Available cooled and ventilated front seats.
- Available tri-zone HVAC automatic climate control system, standard sliding second-row seating with three seatback angles and available heated rear outboard seats.
- Available seven-speaker Bose premium audio system.



Envision Premium II shown in Ebony with Ebony accents and available features





Buick engineered Envision with QuietTuning, a technology that helps reduce, block and absorb noise and vibration in the cabin, so it's a quiet environment ideal for conversation. How does QuietTuning work? By counteracting engine noise with Active Noise Cancellation. By helping to block outside noise with acoustic laminated glass in the windshield and front side windows and using inner-door sound barriers and triple door seals. By absorbing engine noise and vibration with premium seating materials and hydraulic top engine mounts.



## RESPOND

IN THE 2018 ENVISION, ADVANCED ENGINEERING SYSTEMS CREATE A FEELING OF CONFIDENCE AND CONTROL FOR THE DRIVER.

What forges the connection between a car and its driver? It starts with how well a vehicle responds to driver input—the turn of a steering wheel or the press of a brake pedal. As you settle into the heated driver's seat, your hands wrap around the leather-wrapped rim of the available heated steering wheel, and your eyes scan the gauges laid out in front of you. Now engage the Start button and feel the torque-rich response of Envision's available turbocharged engine. Ready for the best feeling of all? Move the shift lever into Drive. Your every move is met by an available intelligent All-Wheel Drive with active twin-clutch system, helping ensure sure-footed traction.

- An efficient and spirited 2.5L engine with 197 hp is standard. Or choose the available 2.0L Turbo engine with 252 hp and 260 lb-ft of torque to turbocharge every drive.
- The available intelligent All-Wheel Drive with active-twin clutch automatically adjusts torque to each wheel to optimize traction and respond before slip occurs.
- Envision's tight turning radius makes for nimble maneuvers and easy parking.
- The available HiPer Strut front suspension provides Envision with responsive steering and cornering while it helps dampen road noise and vibration.
- Safety features and driver convenience alerts that are available include Forward Collision Alert, Lane Change Alert with Side Blind Zone Alert, Rear Cross Traffic Alert, Lane Keep Assist with Lane Departure Warning, Front and Rear Park Assist and a Safety Alert Seat, while 10 air bags<sup>1</sup> and a Rear Vision Camera are standard.

<sup>1</sup>A NOTE ON CHILD SAFETY: Always use safety belts and the correct child restraint for your child's age and size, even with air bags. Even in vehicles equipped with the Passenger Sensing System, children are safer when properly secured in a rear seat in the appropriate infant, child or booster seat. Never place a rear-facing infant restraint in the front seat of any vehicle equipped with an active frontal air bag. See your vehicle Owner's Manual and child safety seat instructions for more safety information.



Envision Premium II shown in Chili Red Metallic with available features





Apple CarPlay™ on screen



## MOBILE

THERE'S NOW A SIMPLER, SMARTER WAY TO USE YOUR SMARTPHONE IN YOUR CAR.

By supporting Apple CarPlay™<sup>1</sup> and Android Auto™<sup>1</sup> Envision provides seamless integration with your smartphone through the vehicle's built-in 8-inch diagonal color touch-screen.

With Apple CarPlay™<sup>1</sup> just plug in your compatible iPhone® and you'll have easy access to your contacts, maps and select apps that you're familiar with from your iPhone® screen. You can also have Siri® send and read your text messages for you and listen to all of your content from iTunes®, Apple Music™ and other audio apps.

If your phone is an Android™ then Android Auto<sup>1</sup> makes it easy to use the touch-screen display in your Envision to access your phone, texts and music. And with Google Maps, you can get voice-guided navigation, live traffic information, lane guidance and more while keeping your hands on the wheel.

## HOTSPOT

WITH A BUILT-IN WI-FI® HOTSPOT,<sup>2</sup> ENVISION OFFERS YOU A STRONG, RELIABLE CONNECTION WITH BANDWIDTH FOR UP TO SEVEN DEVICES.

The available OnStar Wi-Fi hotspot<sup>2</sup> now travels with you. Your passengers can stream movies and TV on the go, using their favorite apps on their Wi-Fi devices. The built-in Wi-Fi hotspot<sup>2</sup> supports up to seven devices.

After initial setup, whenever your vehicle is on, your hotspot is available and ready to connect to your devices, so it's easy to use. Our strong signal means you have a fast and reliable connection. Your first 3 months or 3GB of data (whichever comes first) are included with your new Envision. After that, you can continue enjoying all of your favorite entertainment while on the go with the available Unlimited Data Plan<sup>3</sup> or select another plan that's right for you.

<sup>1</sup>Vehicle user interfaces are products of Apple® and Google™ and their terms and privacy statements apply. Requires compatible smartphone and data plan rates apply. Requires the Android Auto app on Google Play and an Android-compatible smartphone running Android 5.0 Lollipop or higher. Google, Google Play, Android, Android Auto and other marks are trademarks of Google Inc. <sup>2</sup>Requires a compatible mobile device, active OnStar service and data plan. Data plan provided by AT&T®. <sup>3</sup>Unlimited data plan provided by AT&T. After 22GB of any data usage on a line in a bill cycle, AT&T may slow the data on that line during periods of network congestion for the remainder of that cycle. See att.com/broadbandinfo for details on AT&T network management policies. Data plans provided by AT&T.



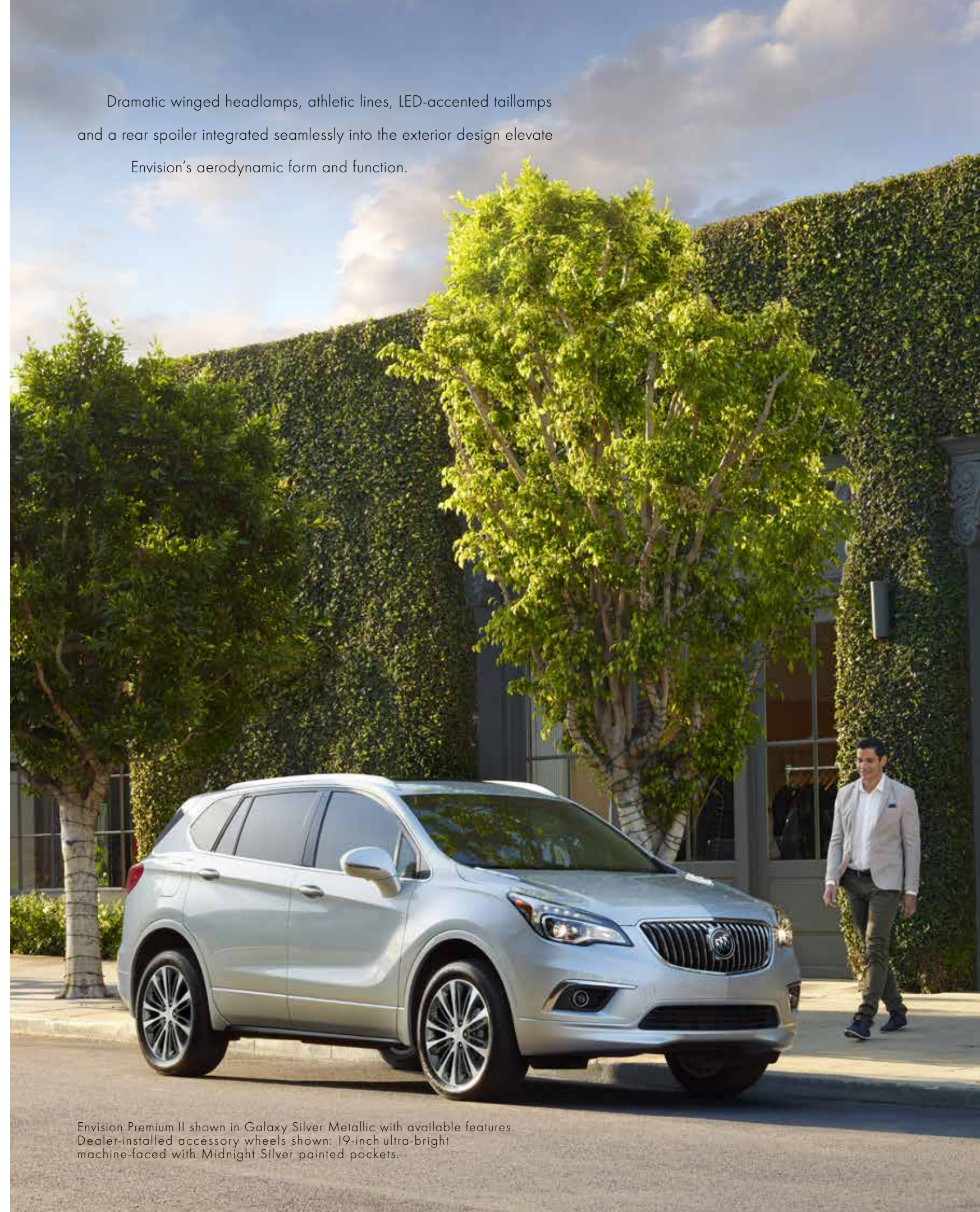
## ACCESS

A HANDS-FREE POWER LIFTGATE OPENS AND CLOSES AUTOMATICALLY TO MAKE LIFE A LITTLE EASIER.

You know that moment when you realize you need an extra hand? Well, help is now here, thanks to Envision's hands-free power liftgate. This standard feature allows you to open and close the liftgate simply by kicking your foot under a sensor beneath the rear bumper. As long as your Envision's keyless entry fob is in your possession, this convenience is always there for you when you find your hands full. And if we know you, that's a situation you find yourself in all the time.



Dramatic winged headlamps, athletic lines, LED-accented taillamps and a rear spoiler integrated seamlessly into the exterior design elevate Envision's aerodynamic form and function.



Envision Premium II shown in Galaxy Silver Metallic with available features. Dealer-installed accessory wheels shown: 19-inch ultra-bright machine-faced with Midnight Silver painted pockets.



## GUIDE

TRAVEL WITH THE ENVISION AND YOUR JOURNEY IS ACCOMPANIED BY A HOST OF AVAILABLE SAFETY INNOVATIONS.

On the 2018 Envision, the available Surround Vision system uses four microcameras embedded in the vehicle to provide the driver with a virtual bird's-eye view around the vehicle. When you're parking, checking the monitor can help you avoid obstacles in your blind spots and navigate tight spaces. Available Forward Collision Alert warns you if it senses a potential collision with a detected vehicle on the road in front of you. If the vehicle is also equipped with available Forward Automatic Braking, the system can automatically engage the brakes to help reduce the collision's severity if a front-end collision is imminent and the driver isn't braking. Teen Driver technology helps support safe driving habits by muting the audio of the radio or any device paired with the vehicle when front-seat occupants aren't wearing their safety belts. Plus, it gives visual and audible warnings when Envision is traveling faster than your preset speed.

## MANEUVER

ENVISION IS A NIMBLE SUV WITH INGENIOUS TECHNOLOGIES DESIGNED TO HELP YOU HANDLE WHAT COMES YOUR WAY.

What makes Envision such a joy to drive? Part of the answer is in the way it helps you handle the challenges that seem to be around every corner, from finding a parallel parking spot to avoiding objects in your path. Using an available combination of up to five cameras and 10 ultrasonic sensors and three radars around the vehicle, Envision helps offer you peace of mind behind the wheel.

**REAR CROSS TRAFFIC ALERT** When you're backing out of a parking space, available Rear Cross Traffic Alert technology uses radar to detect vehicles approaching your Envision and alerts you if it detects a vehicle within 65 feet of either side of your vehicle.

**FORWARD COLLISION ALERT** This available technology can help you to prevent frontal crashes by sensing when you are approaching a detected vehicle in front of you too quickly, and alerting you with visual warnings and audible beeps or vibrations from the available Safety Alert Seat.

**FORWARD AUTOMATIC BRAKING** Available Forward Automatic Braking technology senses when a front-end crash is imminent with the detected vehicle ahead and then can automatically brake to help you reduce crash severity or help avoid the collision in some very low-speed situations.

**LANE CHANGE ALERT WITH SIDE BLIND ZONE ALERT** Available Lane Change Alert warns you when detected vehicles are rapidly approaching your blind spots when you're changing lanes. Available Side Blind Zone Alert provides side-mirror alerts when a detected vehicle enters your blind zone.

**LANE KEEP ASSIST WITH LANE DEPARTURE WARNING** To help drivers avoid unintentionally drifting out of their lane when turn signals are not activated, available Lane Keep Assist provides gentle steering wheel turns, and if necessary, lane-departure alerts.

These safety features are no substitute for the driver's responsibility to operate the vehicle in a safe manner. The driver should remain attentive to traffic, surroundings and road conditions at all times. Read the vehicle Owner's Manual for important feature limitations and information.



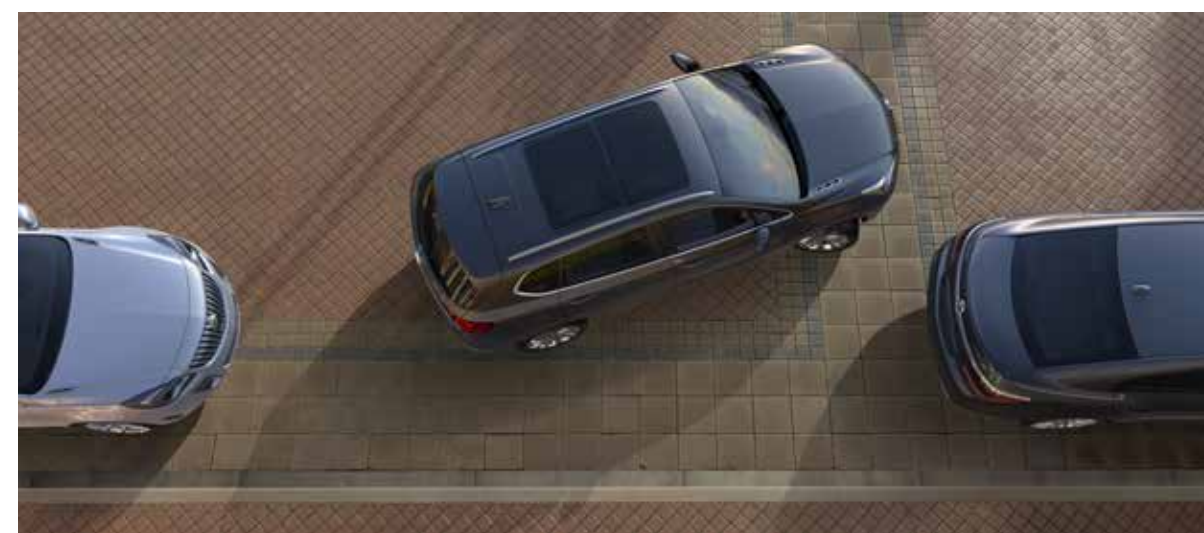
**AVAILABLE SURROUND VISION**  
This system provides a virtual bird's-eye view of what's around you during low-speed maneuvering. Multiple cameras help you avoid obstacles, reduce blind spots and navigate even the tightest spaces with clarity and confidence.



**AVAILABLE SAFETY ALERT SEAT**  
When a collision-avoidance technology such as available Lane Departure Warning triggers an alert, the Safety Alert Seat issues a warning of its own. The left and/or right side of the driver seat cushion gently vibrate to signal the direction of the approaching hazard. For some types of alerts, both sides of the seat vibrate at the same time, for example, if the threat is in front of the vehicle.



**REAR VISION CAMERA** To help you better navigate while backing up, the Rear Vision Camera shows you guidelines and live images of what's behind you on the 8-inch diagonal Color Touch Radio screen.



**AUTOMATIC PARKING ASSIST**  
This available system helps the driver parallel and perpendicular park by automatically steering the vehicle into a detected parking space while the driver follows on-screen text commands, selects gears and does all braking and acceleration.



ONSTAR®<sup>1</sup>

CONNECT TO A SPECIALLY TRAINED ONSTAR ADVISOR JUST BY PUSHING THE BLUE ONSTAR BUTTON IN YOUR ENVISION.



Every 2018 Envision includes the OnStar 5-Year Basic Plan<sup>2</sup> plus a limited service trial of the Guidance Plan<sup>1</sup> that includes a comprehensive suite of emergency, security, navigation and diagnostic services. OnStar can help you stay safe, connected and ready for the road ahead.

**SOS** **EMERGENCY: HELP WHEN IT MATTERS MOST.** With Automatic Crash Response,<sup>3</sup> you can be immediately connected to the help you need the moment you need it, even if you can't ask for it. If you're stranded, have a flat tire or need a tow truck, use Roadside Assistance<sup>4</sup> and an OnStar Advisor will locate a nearby service provider and direct them to your exact location.

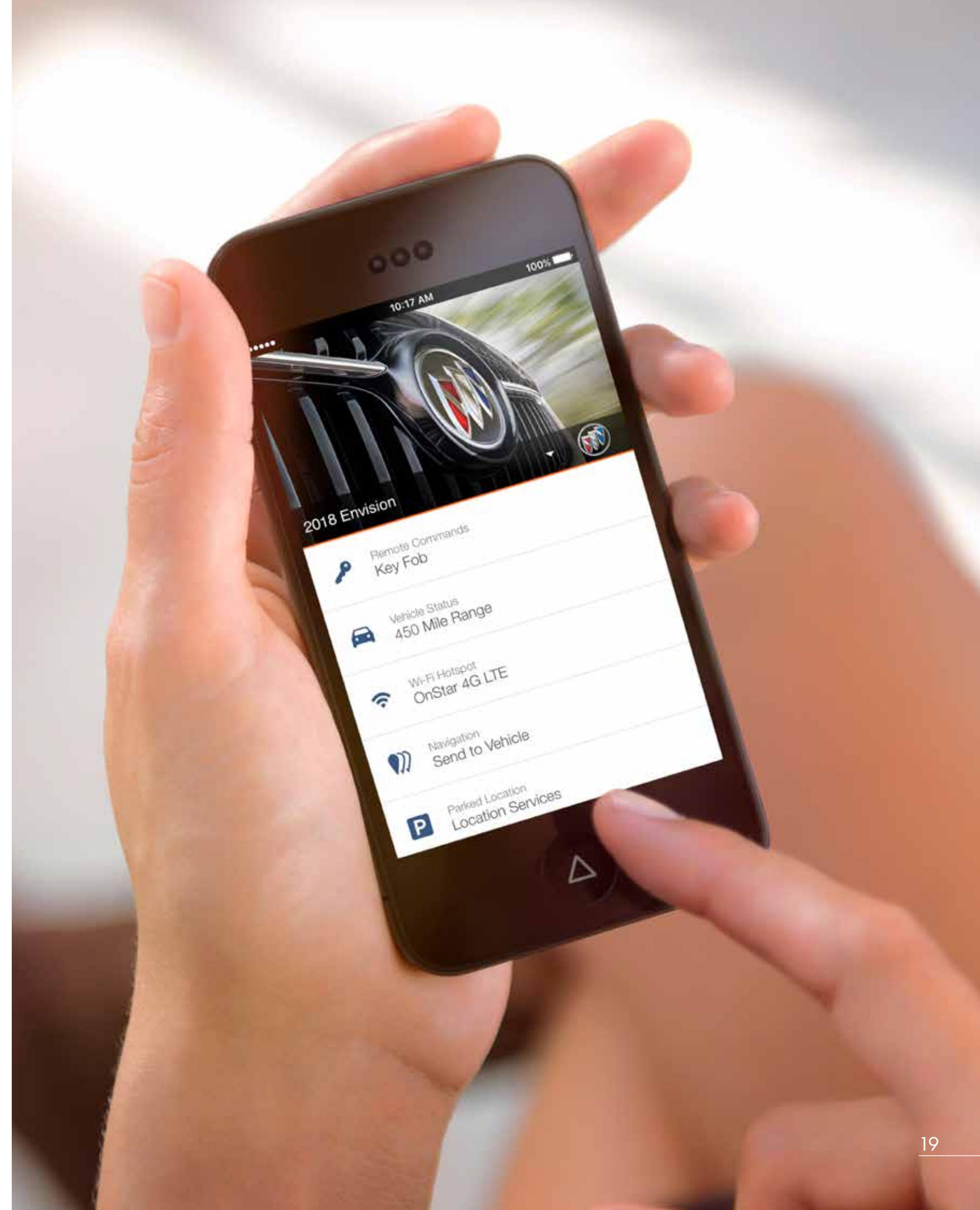
**SECURITY: PROTECTION YOU CAN COUNT ON.** Breathe easy knowing a comprehensive suite of Stolen Vehicle Assistance services is available to help protect your vehicle. With Theft Alarm Notification,<sup>5</sup> OnStar can alert you if your vehicle's alarm is sounding, and if your vehicle is stolen, OnStar will work with authorities to help locate and recover it quickly.

**NAVIGATION: TRAVEL MADE EASY.** Turn-by-Turn Navigation<sup>6</sup> makes everywhere you go as familiar as your own neighborhood. And with OnStar AtYourService,<sup>7M</sup> get valuable offers for better ways to eat, shop, work and play.

**CONNECTIONS: FASTER AND SMARTER.** Stay connected with the available built-in Wi-Fi hotspot<sup>7</sup> and connect up to seven devices at 4G LTE speed.

**VEHICLE MANAGER: PREPARING YOU FOR WHAT'S AHEAD.** Enjoy the ultimate ownership experience with your myBuick mobile app<sup>8</sup>. Use Remote Access<sup>9</sup> to start your engine, lock and unlock your doors, honk the horn and flash the lights. Now you don't have to be near your Envision to control it. Get real-time Diagnostic Alerts<sup>10</sup> or a monthly diagnostics report of the vehicle's engine, transmission and more with Advanced Diagnostics.<sup>10</sup>

<sup>1</sup>Visit onstar.com for coverage map, details and system limitations. <sup>2</sup>Does not include emergency or security services. <sup>3</sup>OnStar acts as a link to existing emergency service providers. Not all vehicles may transmit all crash data. <sup>4</sup>Roadside service provided by Allstate Roadside Services. <sup>5</sup>Theft Alarm Notification features vary by vehicle. Requires factory-installed theft-deterrent system; Security, Guidance or Stolen Vehicle Assistance Plan Add-On and selection of notification communication preference(s). Vehicles must be locked electronically to arm the factory-installed theft-deterrent system. Messaging and data rates may apply. <sup>6</sup>Requires Guidance or Navigation Plan Add-On. <sup>7</sup>Requires a compatible mobile device, active OnStar service and data plan. 4G LTE service available in select markets. Data plans provided by AT&T. <sup>8</sup>Requires data plan, compatible vehicle and compatible device. Some features require factory-installed remote start, power locks, Tire Pressure Monitoring System or active OnStar service. <sup>9</sup>Unlock feature requires automatic locks. Remote start requires factory-installed and enabled remote-start system. <sup>10</sup>Capabilities vary by model. Message and data rates may apply. Requires active OnStar service, email address on file and enrollment in Advanced Diagnostics.





PERSONALIZE

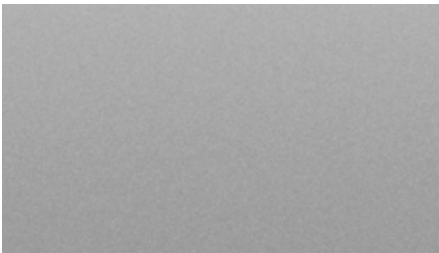
ENVISION OFFERS A CAPTIVATING CHOICE OF EXTERIOR AND INTERIOR COLORS, AND A RANGE OF WHEELS.

EXTERIOR COLORS

SUMMIT WHITE<sup>1</sup>



GALAXY SILVER METALLIC<sup>2</sup>



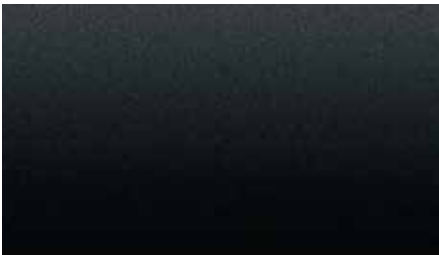
CHILI RED METALLIC<sup>2</sup>



MIDNIGHT AMETHYST METALLIC<sup>2</sup>



EBONY TWILIGHT METALLIC<sup>2</sup>



BRONZE ALLOY METALLIC<sup>2</sup>



WHEELS

18" 10-SPOKE PAINTED ALUMINUM  
Standard on Envision (1SV) and Preferred



18" 10-SPOKE POLISHED ALUMINUM  
Standard on Essence



19" 10-SPOKE ALUMINUM WITH PREMIUM  
MANOOGIAN FINISH  
Standard on Premium and Premium II



INTERIOR COLORS

LIGHT NEUTRAL WITH EBONY ACCENTS CLOTH OR LEATHER-APPOINTED SEATING



EBONY WITH EBONY ACCENTS LEATHER-APPOINTED SEATING



EBONY WITH DARK PLUM ACCENTS LEATHER-APPOINTED SEATING



CHESTNUT WITH EBONY ACCENTS LEATHER-APPOINTED SEATING



<sup>1</sup>Color not available on Preferred.    <sup>2</sup>Additional charge, premium paint. No-cost option on Preferred only. Not available on Envision (1SV).



FEATURES

	● STANDARD	◇ AVAILABLE	— NOT AVAILABLE					
				ENVISION (1SV)	PREFERRED	ESSENCE	PREMIUM	PREMIUM II
POWER PROGRAMMABLE HANDS-FREE LIFTGATE	●			●	●	●	●	●
KEYLESS OPEN AND START	●			●	●	●	●	●
HEATED FRONT SEATS	●			●	●	●	●	●
REAR VISION CAMERA	●			●	●	●	●	●
REAR PARK ASSIST	●			●	●	●	●	●
APPLE CARPLAY™ COMPATIBILITY¹	●			●	●	●	●	●
ANDROID AUTO™ COMPATIBILITY¹	●			●	●	●	●	●
ONSTAR WI-FI® HOTSPOT² (3-month/3GB data trial, whichever comes first)	●			●	●	●	●	●
ONSTAR BASIC PLAN³ (For 5 years, includes select myBuick mobile app⁴ features)	●			●	●	●	●	●
ONSTAR GUIDANCE PLAN⁵ (Limited service trial excludes Hands-Free Calling minutes)	●			●	●	●	●	●
HEATED STEERING WHEEL	—			—	—	●	●	●
PERFORATED, LEATHER-APPOINTED SEATING SURFACES	—			—	—	●	●	●
DRIVER MEMORY SETTINGS	—			—	—	●	●	●
LANE CHANGE ALERT WITH SIDE BLIND ZONE ALERT	—			—	—	●	●	●
FRONT RAINSENSE WIPERS	—			—	—	—	●	●
DRIVER SAFETY ALERT SEAT	—			—	—	—	●	●
LANE KEEP ASSIST WITH LANE DEPARTURE WARNING	—			—	—	—	●	●
FORWARD COLLISION ALERT	—			—	—	—	●	●
8" DIAGONAL MULTICOLOR DRIVER INFORMATION CENTER	—			—	—	—	●	●
ALL-WHEEL DRIVE	—	◇		—	◇	◇	—	—
ALL-WHEEL DRIVE WITH ACTIVE TWIN CLUTCH	—			—	—	—	●	●
VENTILATED AND COOLED FRONT SEATS	—			—	—	—	—	●
AUTOMATIC PARKING ASSIST Includes Ultrasonic Front and Rear Park Assist	—			—	—	—	—	●
HEAD-UP DISPLAY	—			—	—	—	—	●
PANORAMIC MOONROOF	—			—	—	◇	◇	◇
SURROUND VISION⁶	—			—	—	—	—	◇

¹Vehicle user interfaces are products of Apple® and Google™ and their terms and privacy statements apply. Requires compatible smartphone and data plan rates apply. Requires the Android Auto app on Google Play and an Android-compatible smartphone running Android™ 5.0 Lollipop or higher. Google, Google Play, Android and Android Auto are trademarks of Google Inc.   ²Requires a compatible mobile device, active OnStar service and data plan. 4G LTE service available in select markets. Visit onstar.com for coverage map, details and system limitations. Data plan provided by AT&T®   ³Does not include emergency or security services.   ⁴Requires data plan, compatible vehicle and compatible device. Some features require factory-installed remote start, power locks, Tire Pressure Monitoring System or active OnStar service.   ⁵Visit onstar.com for coverage map, details and system limitations.   ⁶Included and only available with Driver Confidence Package.

PACKAGES

	◇ AVAILABLE	— NOT AVAILABLE						
			ENVISION (1SV)	PREFERRED	ESSENCE	PREMIUM	PREMIUM II	
DRIVER CONFIDENCE PACKAGE: Includes Adaptive Cruise Control, Surround Vision and Forward Automatic Braking			—	—	—	—	◇	
BUICK INTERIOR PROTECTION PACKAGE: Includes the following dealer-installed accessories: front and rear all-weather floor mats and all-weather cargo mat (not available with Interior Luxury Package, Hit the Road Package or Road Trip Package)			—	◇	◇	◇	◇	
CARGO PACKAGE: Includes the following dealer-installed accessories: cargo shade and cargo net			—	◇	◇	◇	◇	
HIT THE ROAD PACKAGE: Includes the following dealer-installed accessories: integrated cargo liner, custom-molded body-color splash guards and roof rack cross rails (not available with Buick Interior Protection Package, Active Package or Road Trip Package)			—	—	◇	◇	◇	
INTERIOR LUXURY PACKAGE: Includes the following dealer-installed accessories: illuminated front-door sill plates and premium carpeted floor mats (not available with Buick Interior Protection Package)			—	◇	◇	◇	◇	
ACTIVE PACKAGE: Includes the following dealer-installed accessories: Trailering Package and integrated cargo liner (not available with Hit the Road Package)			—	◇	◇	◇	◇	
ROAD TRIP PACKAGE: Includes the following dealer-installed accessories: roof rack cross rails and all-weather floor mats (not available with Buick Interior Protection Package or Hit the Road Package)			—	—	◇	◇	◇	
TRAILERING PACKAGE: Includes the following dealer-installed accessories: trailer hitch and wiring harness (included and only available with Active Package)			—	◇	◇	◇	◇	



# SPECIFICATIONS

DIMENSIONS  
AND CAPACITIES

## CAPACITIES

	Standard engine on Envision (1SV), Preferred and Essence	Standard engine on Premium and Premium II
Engine Type	2.5L DOHC SIDI with VVT	2.0L Turbo DOHC SIDI with VVT
Horsepower	197	252
Torque	192 lb-ft	260 lb-ft
EPA-estimated mpg	22 city/29 hwy (FWD); 21 city/27 hwy (AWD)	20 city/26 hwy (AWD)
Fuel Tank (approx.)	17.3 gallons	17.3 gallons
Cargo Capacity <sup>1</sup>	With seats up: 26.9 cu. ft. Seats down: 57.3 cu. ft.	With seats up: 26.9 cu. ft. Seats down: 57.3 cu. ft.

<sup>1</sup>Cargo and load capacity limited by weight and distribution.

## DIMENSIONS (INCHES)

Wheelbase	108.3
Overall length	183.7
Body width	72.4
Overall height	66.8
Track width, front/rear	62.0/62.0
Head room, front/rear	40.0/38.5
Shoulder room, front/rear	57.0/55.8
Hip room, front/rear	54.4/53.1
Leg room, front/rear	40.9/37.5

# IMPORTANT WORDS



Since some information may have been updated since the time of printing, please check with your Buick dealer for complete details. Buick reserves the right to lengthen or shorten the model year for any product for any reason, or to start and end model years at different times.

**NEW-VEHICLE LIMITED WARRANTY** This warranty is for GM vehicles registered in the USA. See your Buick dealer for terms and conditions.

4 years/50,000 miles (whichever comes first): Bumper-to-Bumper Limited Warranty. The entire vehicle is warranted for repairs, including parts and labor, to correct defects in materials or workmanship. The warranty covers towing to the nearest Buick dealership, and there is no deductible for warranty repairs during the warranty period. The warranty transfers automatically with vehicle ownership during the warranty period.

6 years/70,000 miles (whichever comes first): Transferable Powertrain Limited Warranty plus Roadside Assistance and Courtesy Transportation.

6 years/100,000 miles (whichever comes first): Body and sheet metal components are warranted against rust-through corrosion.

**EXPERIENCE BUICK PROTECTION** Every 2018 Buick model includes a maintenance program that covers the first two visits of oil and filter changes, tire rotations and 27-point inspections for up to 2 years or 24,000 miles, whichever comes first (does not include air filters). The program is fully transferable to subsequent owners. See participating dealer for other restrictions and complete details.

**AN IMPORTANT NOTE ABOUT ALTERATIONS AND WARRANTIES** Installations or alterations to the original equipment vehicle (or chassis) as distributed by General Motors are not covered by the General Motors New-Vehicle Limited Warranty. The special body company, assembler, equipment installer or upfitter is solely responsible for warranties on the body or equipment and any alterations (or any effect of the alterations) to any of the parts, components, systems or assemblies installed by GM. General Motors is not responsible for the safety or quality of design features, materials or workmanship of any alterations by such suppliers.

**ASSEMBLY** Buick vehicles and their components are assembled or produced by different operating units of General Motors, its subsidiaries or suppliers to GM worldwide. We sometimes find it necessary to produce Buick vehicles with different or differently sourced components than originally scheduled.

Since some options may be unavailable when your vehicle is assembled, we suggest that you verify that your vehicle includes the equipment you ordered or, if there are changes, that they are acceptable to you.

**ENGINES** Buick products are equipped with engines produced by GM Powertrain or other suppliers to GM worldwide. The engines in Buick products may also be used in other GM makes and models.

**TRAILERING AND OFF-ROAD DRIVING INFORMATION** Please go to [buick.com](http://buick.com) and carefully review the vehicle Owner's Manual for important safety information about trailering or off-road driving in your vehicle.

**A NOTE ON CHILD SAFETY** Always use safety belts and the correct child restraint for your child's age and size, even with air bags. Even in vehicles equipped with the Passenger Sensing System, children are safer when properly secured in a rear seat in the appropriate infant, child or booster seat. Never place a rear-facing infant restraint in the front seat of any vehicle equipped with an active frontal air bag. See your vehicle Owner's Manual and child safety seat instructions for more safety information.

**FLEET ORDERS** Some standard content may be deleted with fleet orders. See dealer for details.

**TAKE OWNERSHIP TO THE NEXT LEVEL** Create an Owner Center account to gain unrestricted access to everything you need to get the most out of your new vehicle. Receive alerts and service offers, schedule service, view vehicle-specific how-to videos and check service records. All online, anytime. Go to [my.buick.com](http://my.buick.com) to take a tour or register your Buick today.

GM, the GM logo, Buick, the Buick emblem, OnStar, the OnStar emblem and the slogans, emblems, vehicle model names, vehicle body designs and other marks appearing in this catalog are the trademarks and/or service marks of General Motors, its subsidiaries, affiliates or licensors. Sirius, XM and all related marks and logos are trademarks of SiriusXM Radio, Inc. The Facebook logo is a trademark of Facebook, Inc. The Twitter logo is a trademark of Twitter, Inc. The YouTube logo, Android Auto and Google Play are trademarks of Google Inc. Apple CarPlay, Siri and iPhone are trademarks of Apple, Inc. The Instagram logo is a trademark of Instagram, Inc. ©2017 General Motors. All rights reserved.

To learn more about why Certified Service is the perfect companion for your Envision, visit [mycertifiedservice.com](http://mycertifiedservice.com).

Dealer-installed accessory wheels shown:  
19-inch ultra-bright machine-faced with  
Midnight Silver painted pockets